

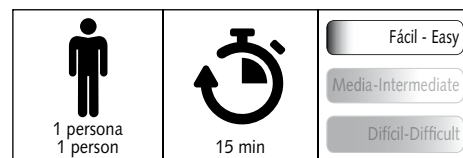
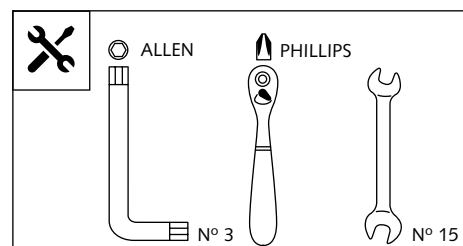
PARAMANOS PARA - HANDPROTECTORS FOR - HANDSCHUTZ FÜR HONDA NC750X '12 - '16

CAMBIO STANDARD SÍ - DCT, CAMBIO AUTOMÁTICO NO / SHIFTING GEARS STANDARD YES, DCT, SHIFTING GEARS AUTOMATIC NO



Ref.: 8549 J
(Color negro/Black colour)

Ref.: 8549 C
(Color carbono/Carbon look)

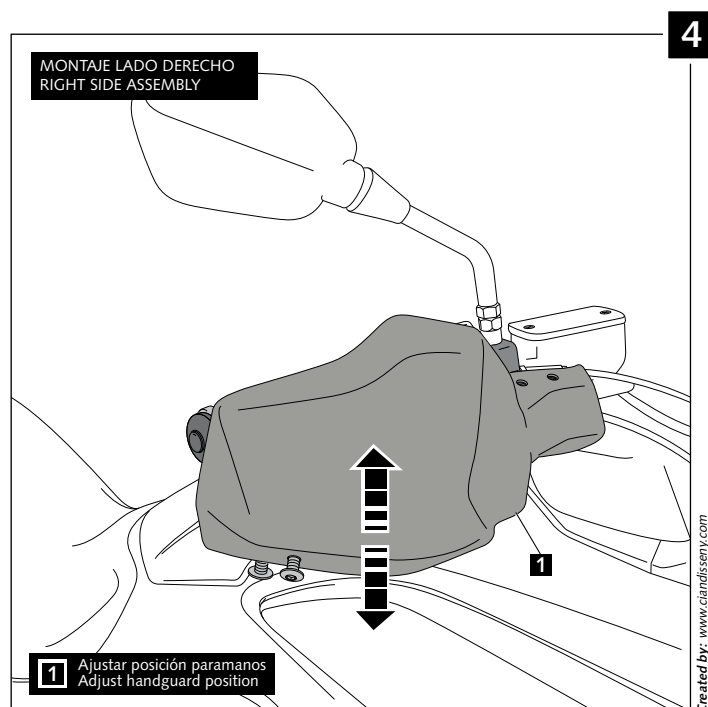
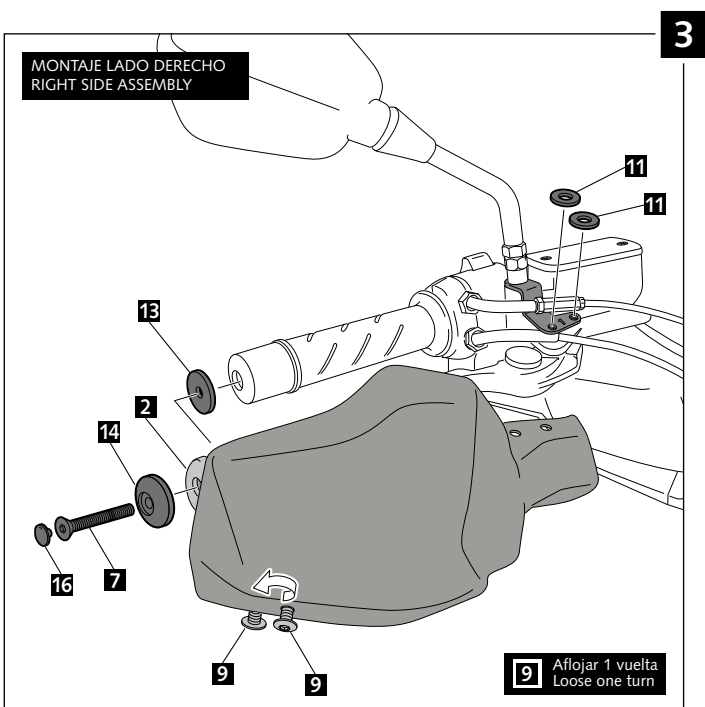
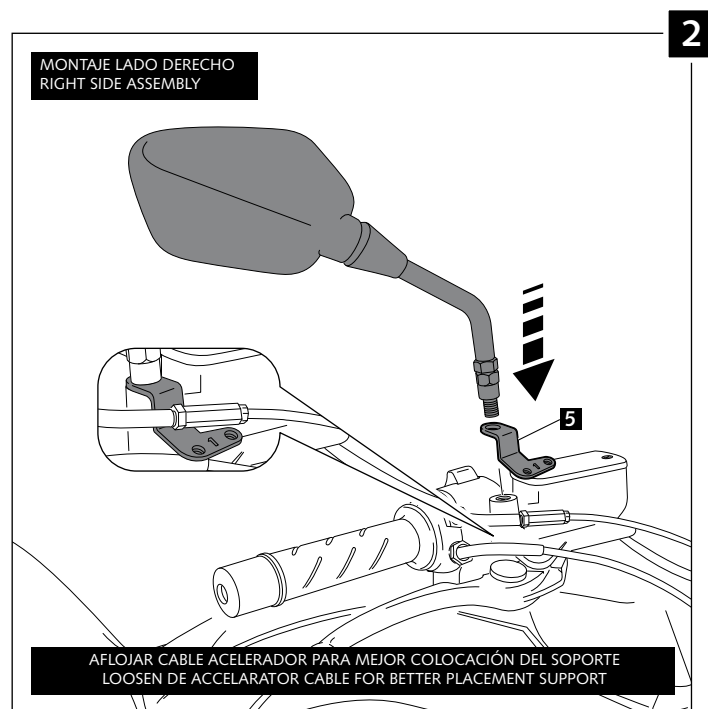
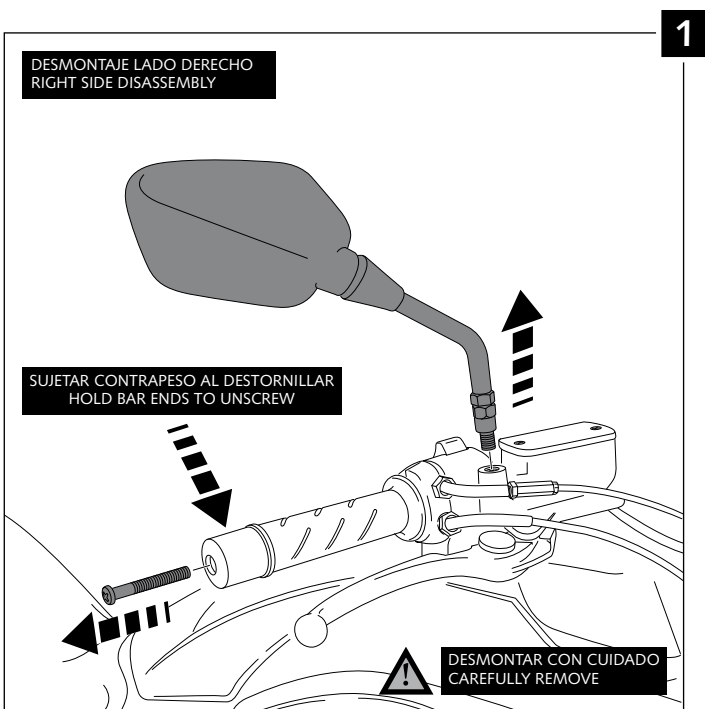


ID.	PIEZA / PART	DESCRIPCIÓN	DESCRIPTION	QTY.
1		Paramanos derecho	Right handguard	1
2		Pieza derecha anclaje manillar Ø6.5 (se suministra montada)	Ø6.5 right handlebar anchoring part (supplied mounted with handguard)	1
3		Paramanos izquierdo	Left handguard	1
2		Pieza izquierda anclaje manillar Ø6.5 (se suministra montada)	Ø6.5 left handlebar anchoring part (supplied mounted with handguard)	1
5		Soporte metálico 1 (Soporte derecho e izquierdo 2016 / Soporte derecho 2012-2015)	Metal support 1 (Right & Left support 2016 / Right support 2012-2015)	2
6		Soporte metálico 2 (Soporte izquierdo 2012-2015)	Metal support 2 (Left support 2012-2015)	1
7		Soporte metálico 3 (Soporte izquierdo 2016)	Metal support 3 (Left support 2016)	1
8		Tornillo Allen M6x75 DIN 7991	M6x75 DIN 7991 Allen screw	2
9		Tornillo Allen M5x11 ISO 7380	M5x11 ISO 7380 Allen screw	8
10		Arandela de Nylon M5x1	M5x1 Nylon washer	8
11		Arandela de goma Ø4,5xØ11,5x2mm	Ø4,5xØ11,5x2mm Rubber washer	8
12		Tuerca grafilada M5 (se suministra montada con las piezas 1-2-3-4)	M5 Special nut (supplied already mounted on items 1-2-3-4)	4
13		Arandela de goma Ø30xØ5,5x1mm	Ø30xØ5,5x1mm Rubber washer	2
14		Arandela de plástico Ø30 x Ø6	Ø30 x Ø6 plastic washer	2
15		Tapón tornillo M5 ISO 7380	M5 ISO 7380 Allen screw cap	8
16		Tapón tornillo M6 DIN 7991	M6 DIN 7991 Allen screw cap	2
17		Kit adhesivos	Stickers set	1

PARAMANOS PARA - HANDPROTECTORS FOR - HANDSCHUTZ FÜR
HONDA NC750X '12 - '16

CAMBIO STANDARD SÍ - DCT, CAMBIO AUTOMÁTICO NO / SHIFTING GEARS STANDARD YES, DCT, SHIFTING GEARS AUTOMATIC NO

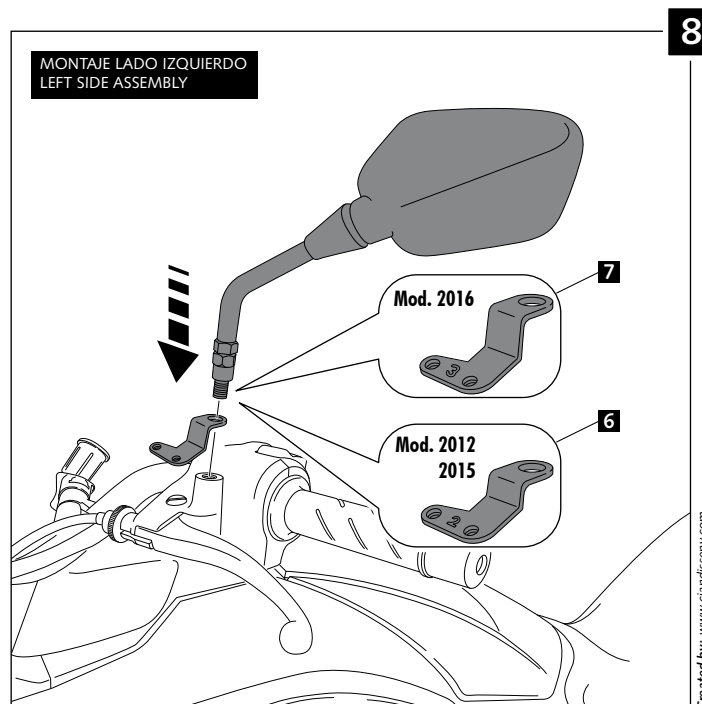
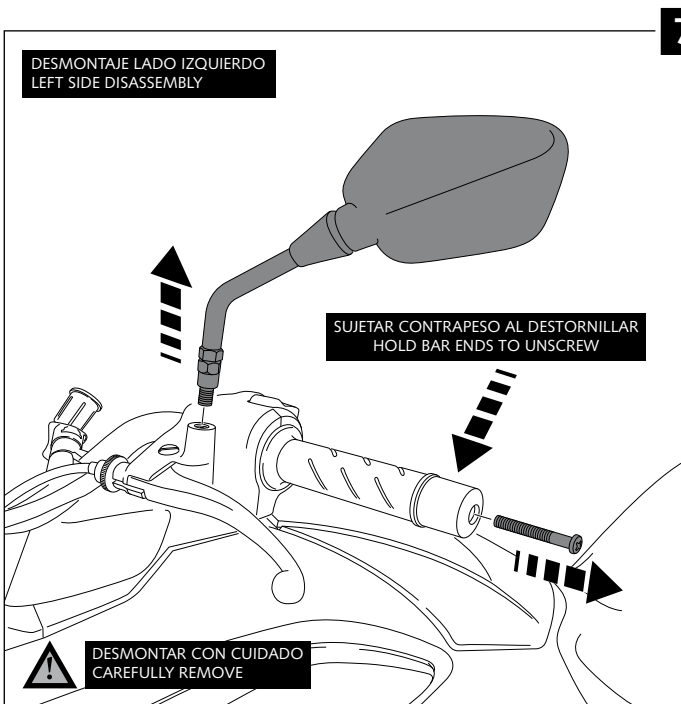
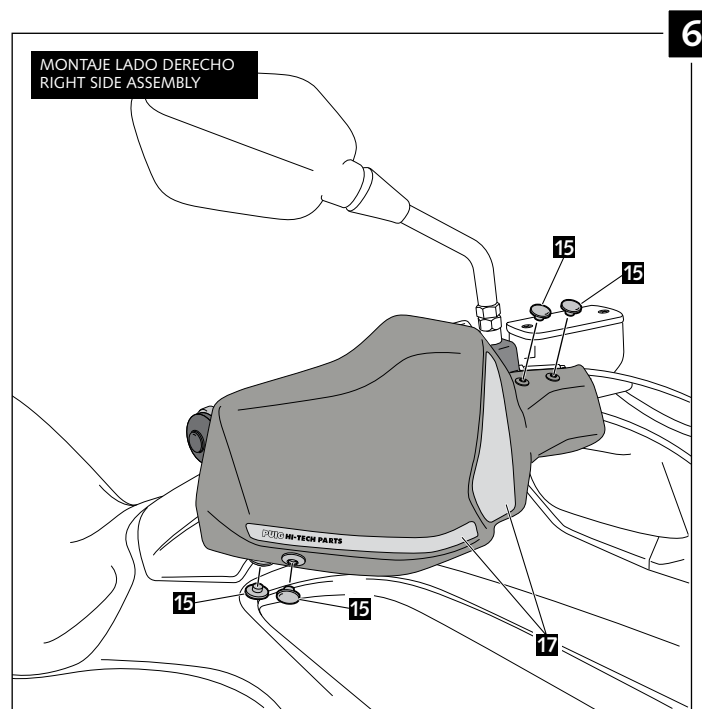
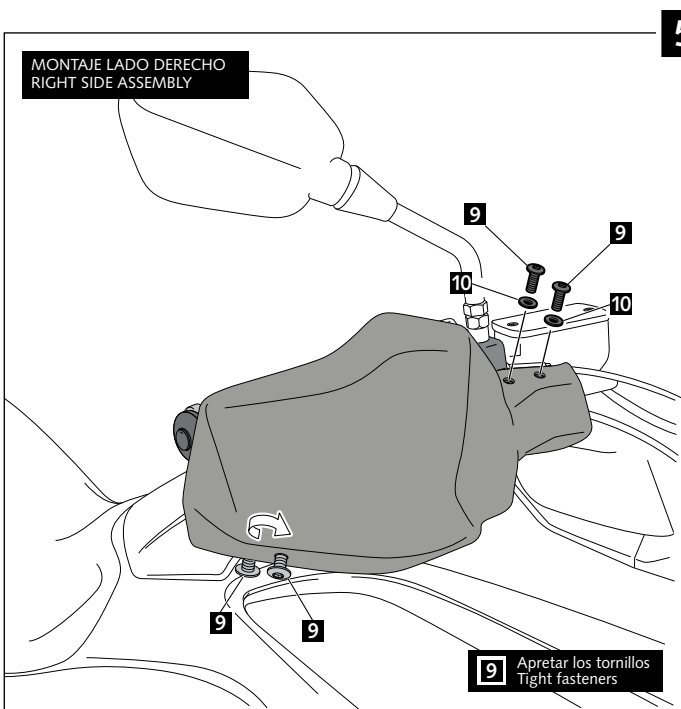
INSTRUCCIONES DE MONTAJE - MOUNTING INSTRUCTIONS - MONTAGEANLEITUNG



PARAMANOS PARA - HANDPROTECTORS FOR - HANDSCHUTZ FÜR
HONDA NC750X '12 - '16

CAMBIO STANDARD SÍ - DCT, CAMBIO AUTOMÁTICO NO / SHIFTING GEARS STANDARD YES, DCT, SHIFTING GEARS AUTOMATIC NO

INSTRUCCIONES DE MONTAJE - MOUNTING INSTRUCTIONS - MONTAGEANLEITUNG



PARAMANOS PARA - HANDPROTECTORS FOR - HANDSCHUTZ FÜR
HONDA NC750X '12 - '16

CAMBIO STANDARD SÍ - DCT, CAMBIO AUTOMÁTICO NO / SHIFTING GEARS STANDARD YES, DCT, SHIFTING GEARS AUTOMATIC NO

INSTRUCCIONES DE MONTAJE - MOUNTING INSTRUCTIONS - MONTAGEANLEITUNG

